



## Light-EW ProLine

### East-West Orientation

With the Light-EW ProLine modules can be installed in East-West orientation without penetration of the roof and a minimum use of ballast. The Light-EW ProLine is available in 10 or 15 degree to allow a layout optimization either in regards to maximum output or maximum number of modules.

Through the flexible arrangement of the modules in landscape orientation the load is optimal distributed on the roof. In order to get the minimum possible load on the roof the Light-EW ProLine was wind tunnel tested and accordingly optimized.

Thanks to the flexible design of the Light-EW ProLine it is possible to use the same components for 10 and 15 degree by simply twisting the foot point at the front and the upper part of the middle leg. The proven Clickstone technology for the module clamping allows a fast and easy installation.

### Maximum service life

All components are made of extruded aluminum and stainless steel. This choice of material guarantees both full recyclability and a maximum service life due to high resistance to corrosion.



Flat roof



East-West Orientation



Framed module



Frameless module



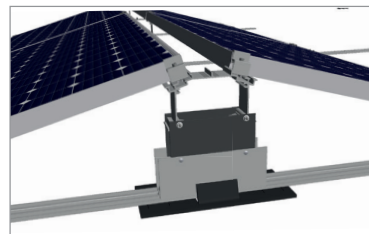
Orientation landscape



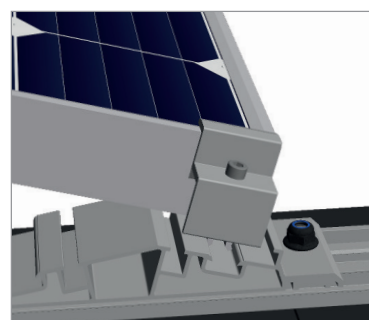


mounting  
systems

Application	Flat roofs <sup>1</sup>
Roofing	For all roof coverings (also gravel) <sup>1</sup>
Roof inclination	Up to 5°
Building height	Depending on wind loads on site <sup>2</sup>
PV modules	Framed and frameless
Module width	900 - 1050 mm
Module length	Up to 1675 mm (longer modules on request)
Module layout	In connection
Module orientation	Landscape
Pitch	10° or 15°
Size of module array	Min. 10 m <sup>2</sup>
Position of the module array	No special requirements
Standards	Eurocode 0 and national annex Eurocode 1 and national annex Eurocode 9 and national annex
Supporting profiles	Aluminium (EN AW 6063 T66)
Small parts	Stainless steel (V2A)
Color	Color aluminium: plate finish
Warranty	10 years <sup>3</sup>



Detail centre support



Detail front & back support

<sup>1</sup> Attention: For any project, please check the static suitability of the building!

<sup>2</sup> Official assessable static calculation available on request, at extra cost.

<sup>3</sup> Please find the exact terms in the Mounting Systems GmbH warranty document.