

**MBB**

**5BB**

\*Transparent doubleglass module can be provided upon request.

# KuDymond

## HIGH EFFICIENCY MONO PERC MODULE

### CS3U-365 | 370 | 375 | 385P-AG

### (1000 V / 1500 V)

#### MORE POWER



Low power loss in cell connection



Low NMOT:  $42 \pm 3 \text{ }^\circ\text{C}$   
Low temperature coefficient  
(Pmax):  $-0.37 \text{ } \%/ \text{ }^\circ\text{C}$



Better shading tolerance

#### MORE RELIABLE



Lower hot spot temperature



Minimizes micro-cracks



Heavy snow load up to 8100 Pa,  
wind load up to 4000 Pa\*



Fire Class A and Type 3 / Type 13 certified  
according to IEC 61730-2 / MST 23 and UL 1703



linear power output warranty



product warranty on materials  
and workmanship

#### MANAGEMENT SYSTEM CERTIFICATES

ISO 9001:2015 / Quality management system  
ISO 14001:2015 / Standards for environmental management system  
OHSAS 18001:2007 / International standards for occupational health & safety

#### PRODUCT CERTIFICATES\*

IEC 61215 / IEC 61730: VDE / CE / CEC AU  
UL 1703: CSA / IEC61701 ED2: VDE / IEC62716: VDE  
Take-e-way

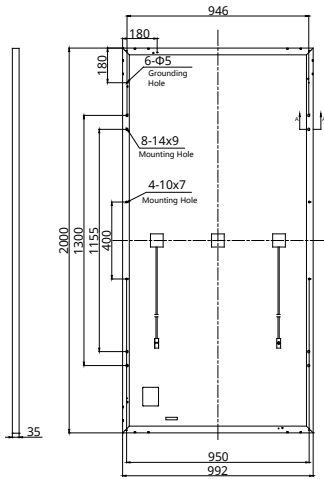


\*We can provide this product with special BOM specifically certified with salt mist, ammonia and sand blowing tests. Please talk to our local technical sales representatives to get your customized solutions.

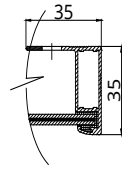
**CANADIAN SOLAR INC.** is committed to providing high quality solar products, solar system solutions and services to customers around the world. No. 1 module supplier for quality and performance/price ratio in IHS Module Customer Insight Survey. As a leading PV project developer and manufacturer of solar modules with over 30 GW deployed around the world since 2001.

## ENGINEERING DRAWING (mm)

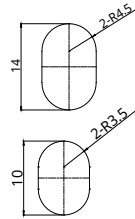
### Rear View



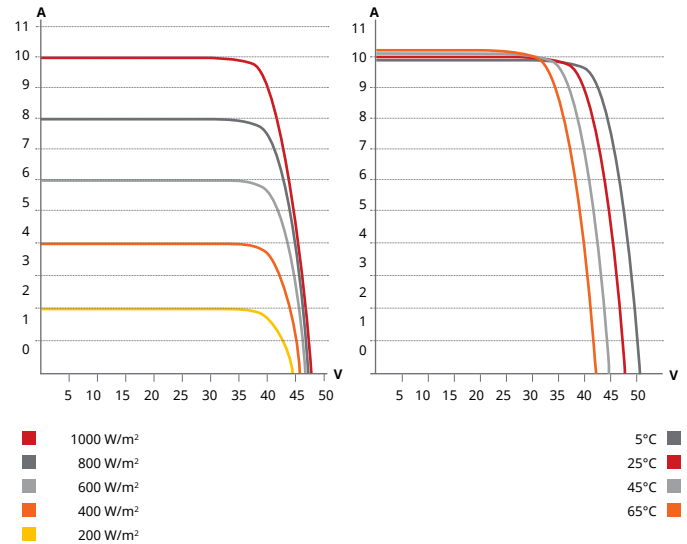
### Frame Cross Section A-A



### Mounting Hole



## CS3U-355P-AG / I-V CURVES



## ELECTRICAL DATA | STC\*

| CS3U                         | 365P-AG                                 | 370P-AG | 375P-AG | 380P-AG | 385P-AG |
|------------------------------|---|---------|---------|---------|---------|
| Nominal Max. Power (Pmax)    | 365 W                                   | 370 W   | 375 W   | 380 W   | 385 W   |
| Opt. Operating Voltage (Vmp) | 39.8 V                                  | 40.0 V  | 40.2 V  | 40.4 V  | 40.6 V  |
| Opt. Operating Current (Imp) | 9.18 A                                  | 9.26 A  | 9.34 A  | 9.42 A  | 9.50 A  |
| Open Circuit Voltage (Voc)   | 47.2 V                                  | 47.4 V  | 47.6 V  | 47.8 V  | 48.0 V  |
| Short Circuit Current (Isc)  | 9.75 A                                  | 9.83 A  | 9.91 A  | 9.99 A  | 10.07 A |
| Module Efficiency            | 18.40%                                  | 18.65%  | 18.90%  | 19.15%  | 19.41%  |
| Operating Temperature        | -40°C ~ +85°C                           |         |         |         |         |
| Max. System Voltage          | 1500V (IEC/UL) or 1000V (IEC/UL)        |         |         |         |         |
| Module Fire Performance      | TYPE 1 (UL 1703) or CLASS C (IEC 61730) |         |         |         |         |
| Max. Series Fuse Rating      | 30 A                                    |         |         |         |         |
| Application Classification   | Class A                                 |         |         |         |         |
| Power Tolerance              | 0 ~ + 5 W                               |         |         |         |         |

\* Under Standard Test Conditions (STC) of irradiance of 1000 W/m², spectrum AM 1.5 and cell temperature of 25°C.

## ELECTRICAL DATA | NMOT\*

| CS3U                         | 365P-AG | 370P-AG | 375P-AG | 380P-AG | 385P-AG |
|------------------------------|---------|---------|---------|---------|---------|
| Nominal Max. Power (Pmax)    | 271 W   | 275 W   | 279 W   | 282 W   | 286 W   |
| Opt. Operating Voltage (Vmp) | 36.8 V  | 37.0 V  | 37.1 V  | 37.3 V  | 37.5 V  |
| Opt. Operating Current (Imp) | 7.38 A  | 7.44 A  | 7.50 A  | 7.57 A  | 7.63 A  |
| Open Circuit Voltage (Voc)   | 44.3 V  | 44.4 V  | 44.6 V  | 44.8 V  | 45.0 V  |
| Short Circuit Current (Isc)  | 7.87 A  | 7.93 A  | 7.99 A  | 8.06 A  | 8.12 A  |

\* Under Nominal Module Operating Temperature (NMOT), irradiance of 800 W/m² spectrum AM 1.5, ambient temperature 20°C, wind speed 1 m/s.

## MECHANICAL DATA

| Specification                      | Data  |
|------------------------------------|---|
| Cell Type                          | Poly-crystalline  |
| Cell Arrangement                   | 144 [2 X (12 X 6)]  |
| Dimensions                         | 2000 X 992 X 35 mm<br>(78.7 X 39.1 X 1.38 in)   |
| Weight                             | 26.5 kg (58.4 lbs)  |
| Front / Back Glass                 | 2.0 mm heat strengthened glass  |
| Frame                              | Anodized aluminium alloy  |
| J-Box                              | IP68, 3 bypass diodes   |
| Cable                              | 4 mm² (IEC), 12 AWG (UL)  |
| Cable Length (Including Connector) | Portrait: 400 mm (15.7 in) (+) / 280 mm (11.0 in) (-); landscape: 1250 mm (49.2 in); leap-frog connection: 1670 mm (65.7 in)* |
| Connector                          | T4 series   |
| Per Pallet                         | 30 pieces   |
| Per Container (40' HQ)             | 660 pieces  |

\* For detailed information, please contact your local Canadian Solar sales and technical representatives.

## TEMPERATURE CHARACTERISTICS

| Specification                        | Data         |
|--------------------------------------|--------------|
| Temperature Coefficient (Pmax)       | -0.37 % / °C |
| Temperature Coefficient (Voc)        | -0.29 % / °C |
| Temperature Coefficient (Isc)        | 0.05 % / °C  |
| Nominal Module Operating Temperature | 42 ± 3°C     |

## PARTNER SECTION



\* The specifications and key features contained in this datasheet may deviate slightly from our actual products due to the on-going innovation and product enhancement. Canadian Solar Inc. reserves the right to make necessary adjustment to the information described herein at any time without further notice.

## CANADIAN SOLAR INC.

545 Speedvale Avenue West, Guelph, Ontario N1K 1E6, Canada, [www.canadiansolar.com](http://www.canadiansolar.com), [support@canadiansolar.com](mailto:support@canadiansolar.com)